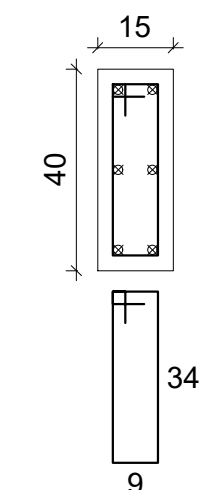
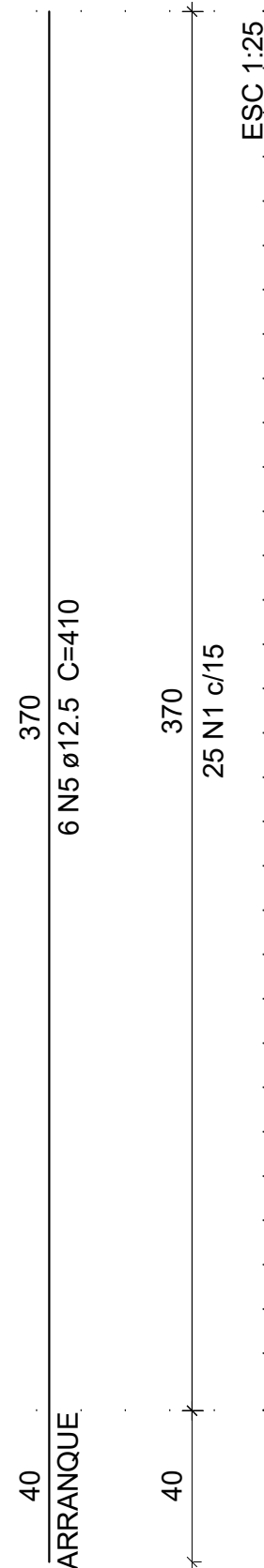


P1=P5=P6=P18=P24=P41

TÉRREO  
ESC 1:75

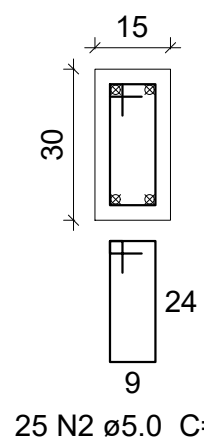


25 N1 ø5.0 C=98

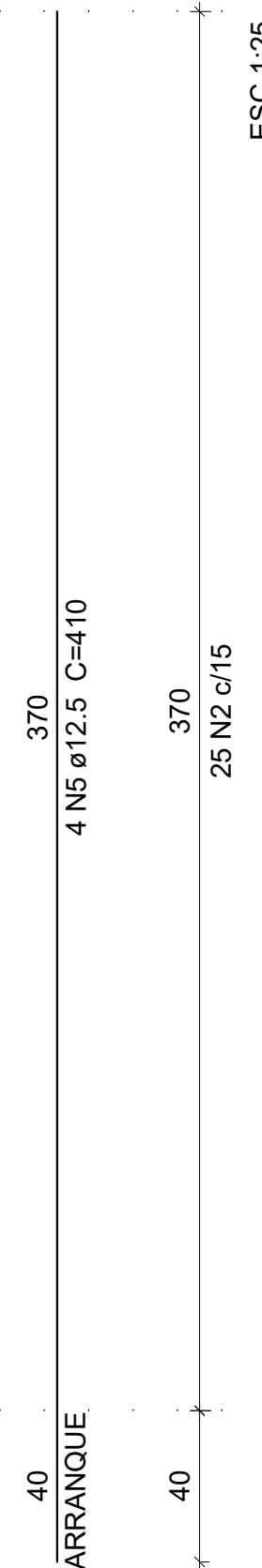


P2=P3=P4=P7=P8=P9=  
P10=P16=P25=P26=P29=P30=P31  
P32=P33=P34=P38

TÉRREO  
ESC 1:75

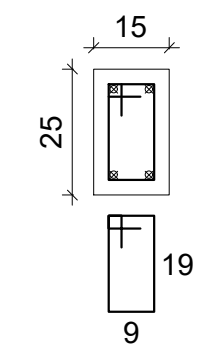


25 N2 ø5.0 C=78

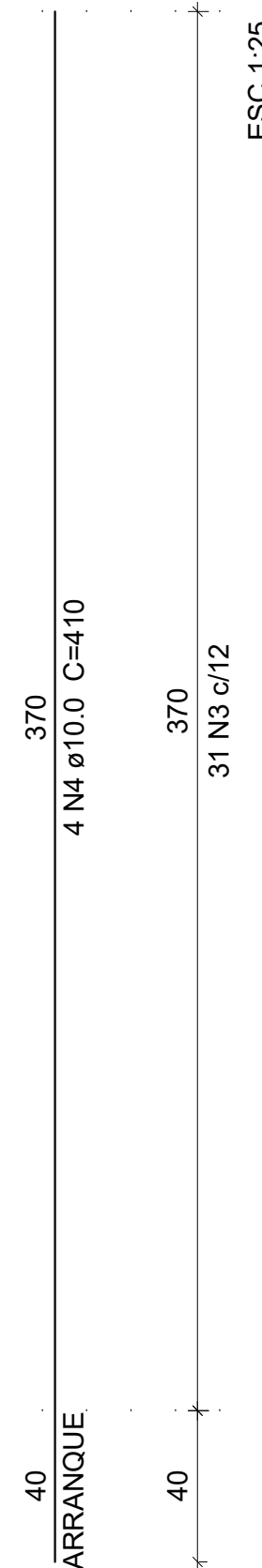


P21=P27=P39=P42

TÉRREO  
ESC 1:75

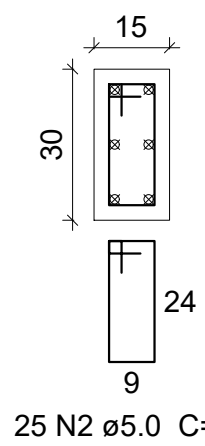


31 N3 ø5.0 C=68

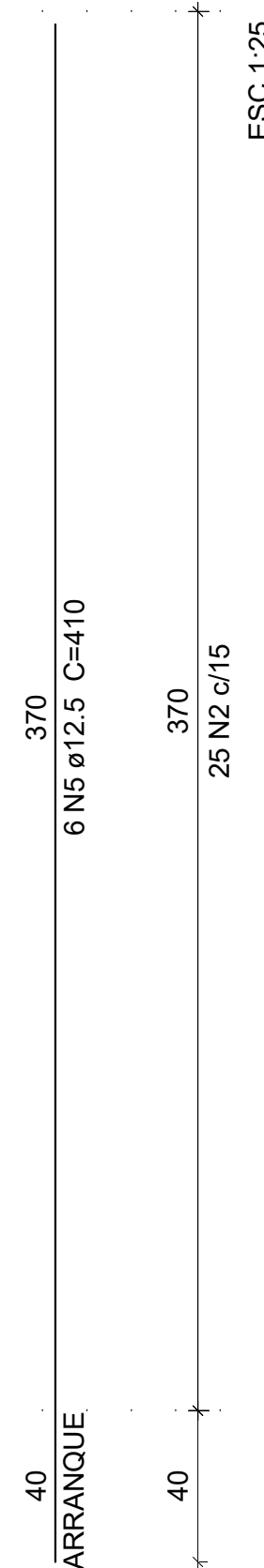


P11=P12=P13=P14=P15=P17=  
P19=P22=P23=P26=P35=P36=  
P37=P40

TÉRREO  
ESC 1:75

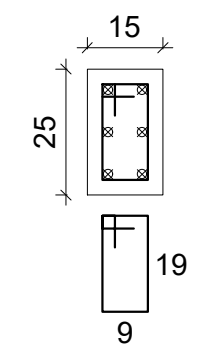


25 N2 ø5.0 C=78

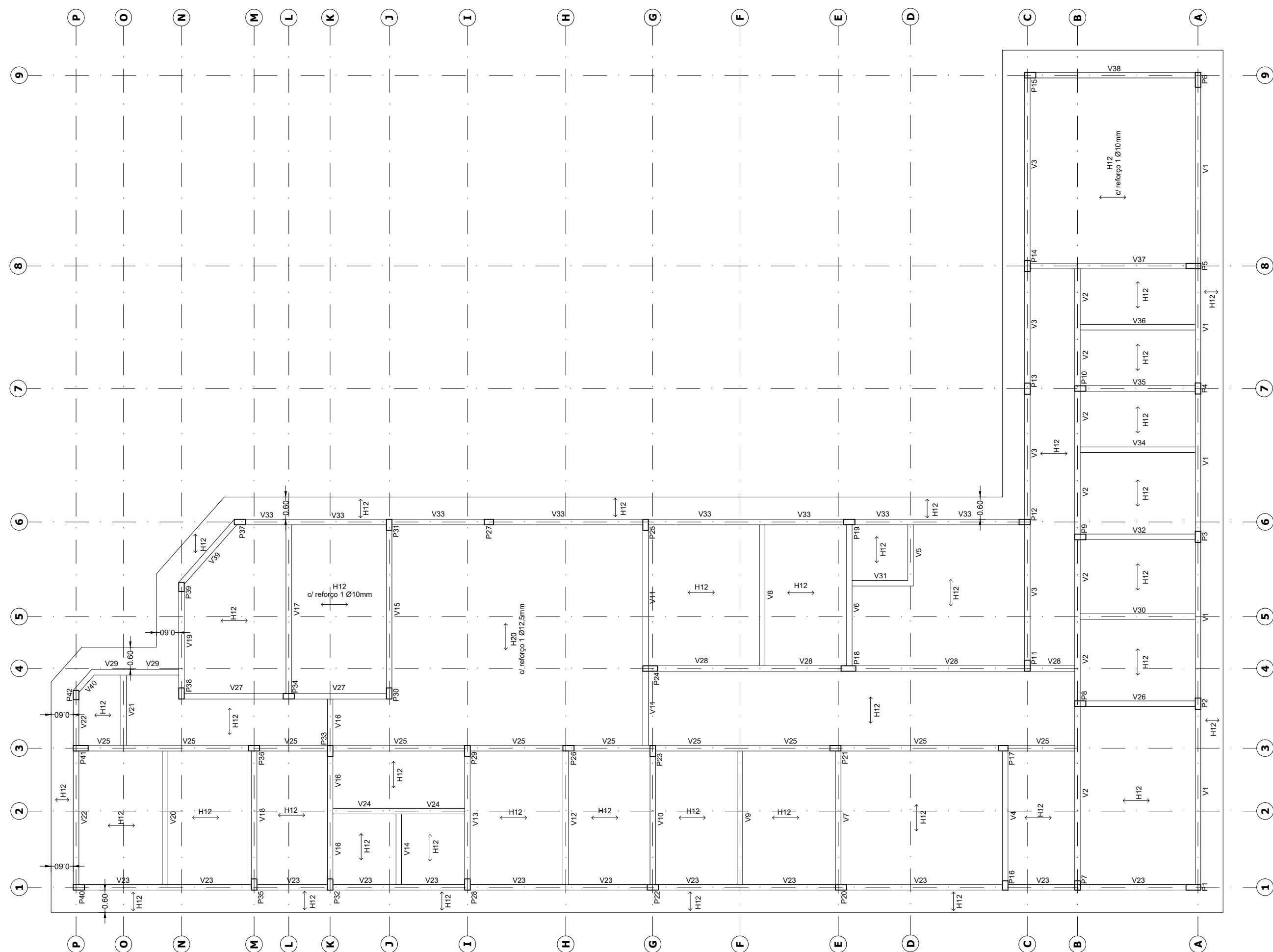
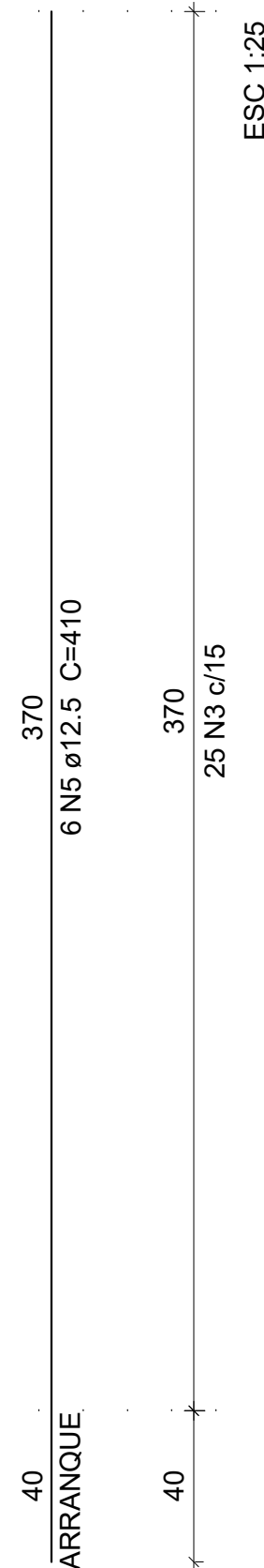


P20

TÉRREO  
ESC 1:75



25 N3 ø5.0 C=68



ESTRUTURA - PILARES, VIGAS E LAJES  
Escala: 1:100

## PROJETO ESTRUTURAL PILARES

FOLHA  
ÚNICA

LOCALIZAÇÃO:  
Rua: Inglaterra  
Bairro: São Cristóvão, Extrema/MG.  
PROPRIETÁRIO:  
Município de Extrema  
RESPONSÁVEL TÉCNICO  
Denis H. Morbidelli A. Lima  
FOLHA: A1 594 x 841mm  
ESCALAS: INDICADAS

DESCRIÇÃO:  
Projeto estrutural para a  
construção de uma unidade básica  
de saúde

Município de Extrema  
CNPJ: 18.677.591/0001-00

Denis H. Morbidelli A. Lima  
CREA-MG: 239835/LP  
ENG. Civil